



Columbus Insight

Getting Started

Overview

Columbus Insight is an alternative viewer for images in the Columbus database. It also allows the import of a large range of different microscopy image formats into the Project tree and can be used if the Columbus Import does not support the desired format.

Installation

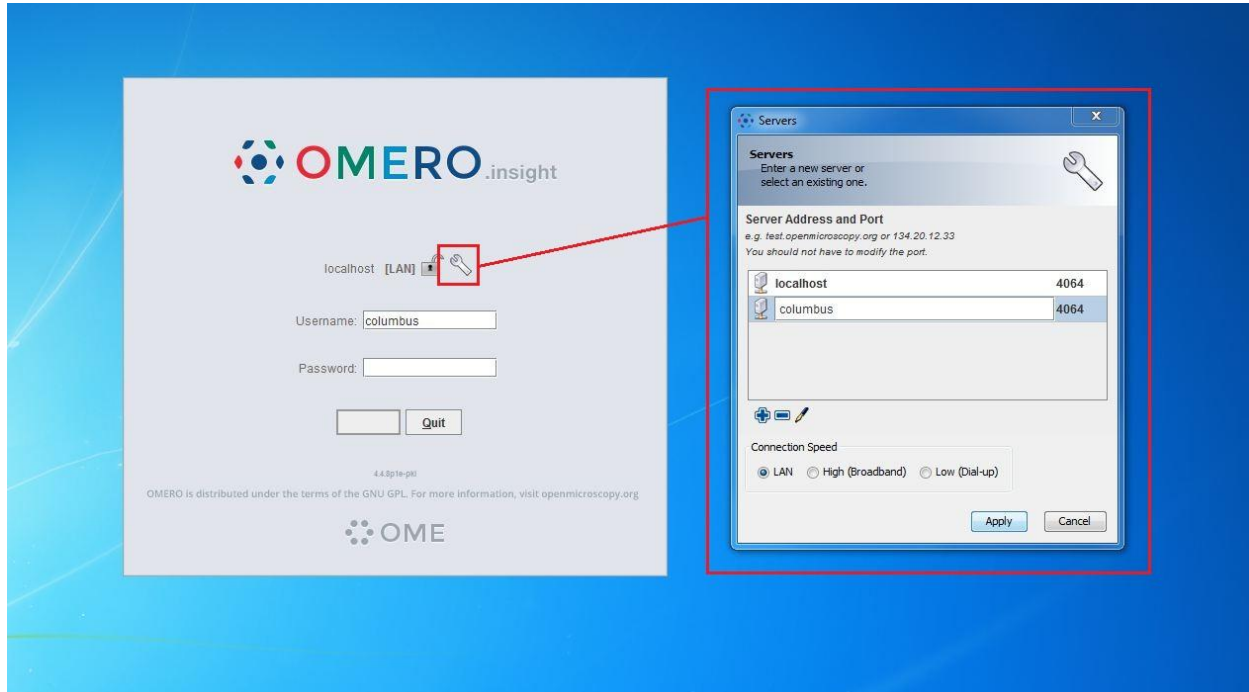
Columbus Insight is contained as part of the "Columbus Clients" package, which is available to download via the Columbus web interface by selecting "administration" ... "software downloads" ... and then selecting the appropriate download for your client workstation.

Prerequisites

- TCP port 4064 must be open on both the Columbus server and client machine.

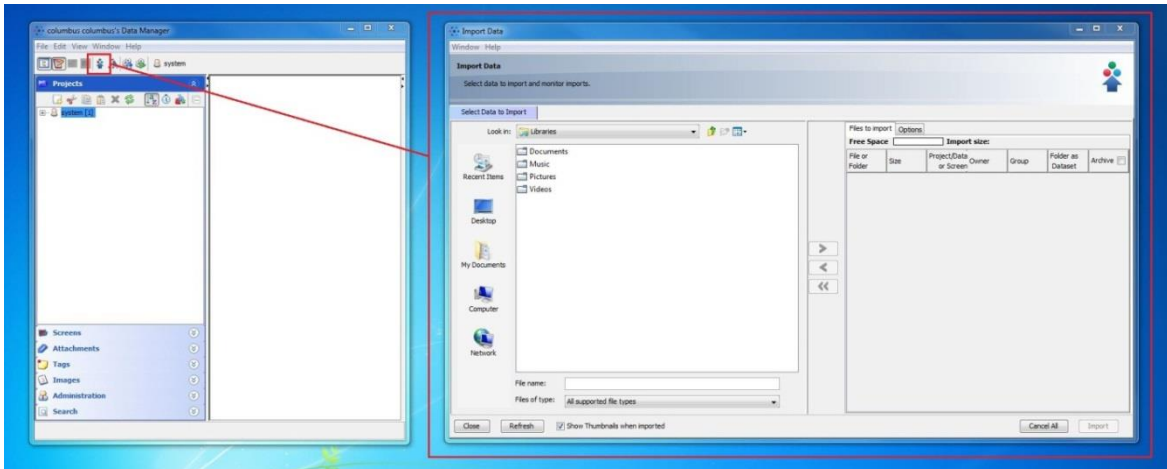
Adding a Columbus server

After launching the Insight application, select the "wrench" icon to configure the connection to your Columbus server. You must specify the Columbus server IP address (or hostname) and port (4064). Use your Columbus user account credentials to connect.

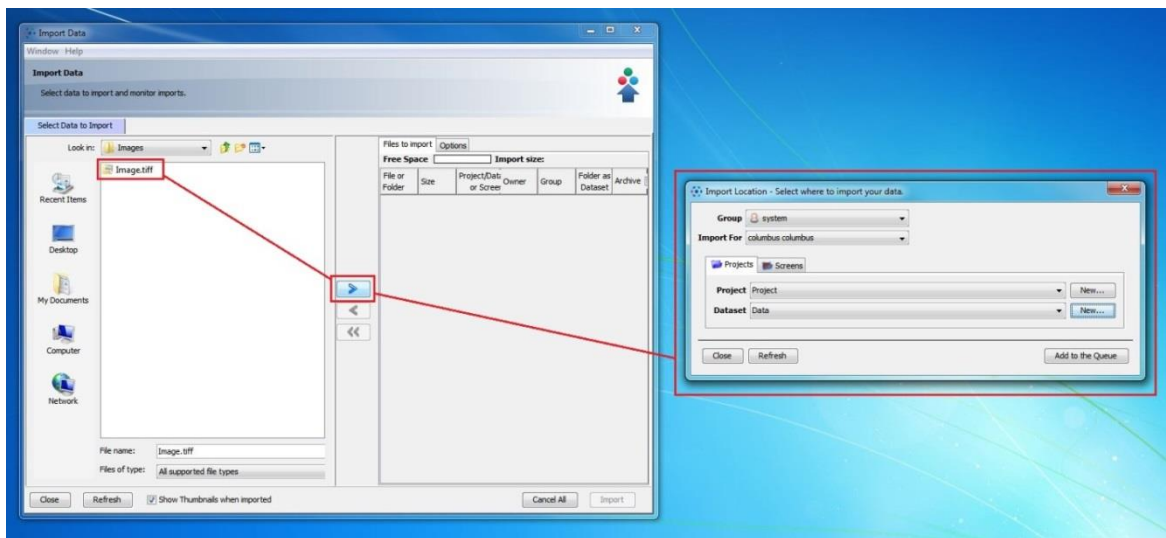


Importing Data

After the Insight application has launched, select the Importer icon to bring up the importer interface.

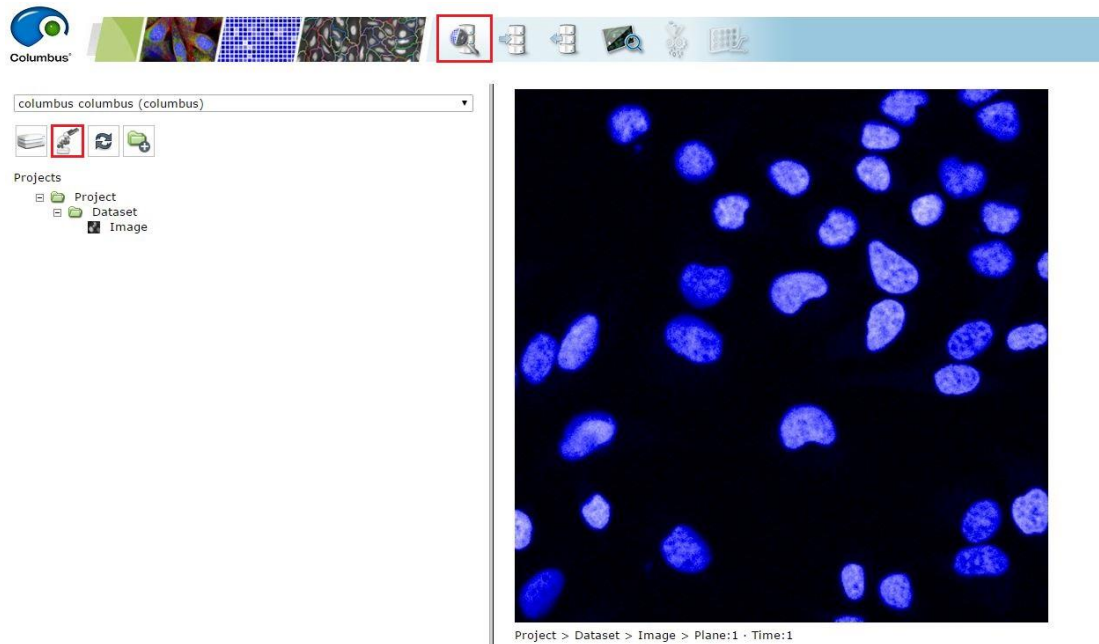


Using the browser window on the left-hand side, navigate to your data and select it for import into Columbus using the arrow button. At this point you will be prompted to select a “project” and “dataset” into which the data will be imported (you can generate new projects at this time if you wish).



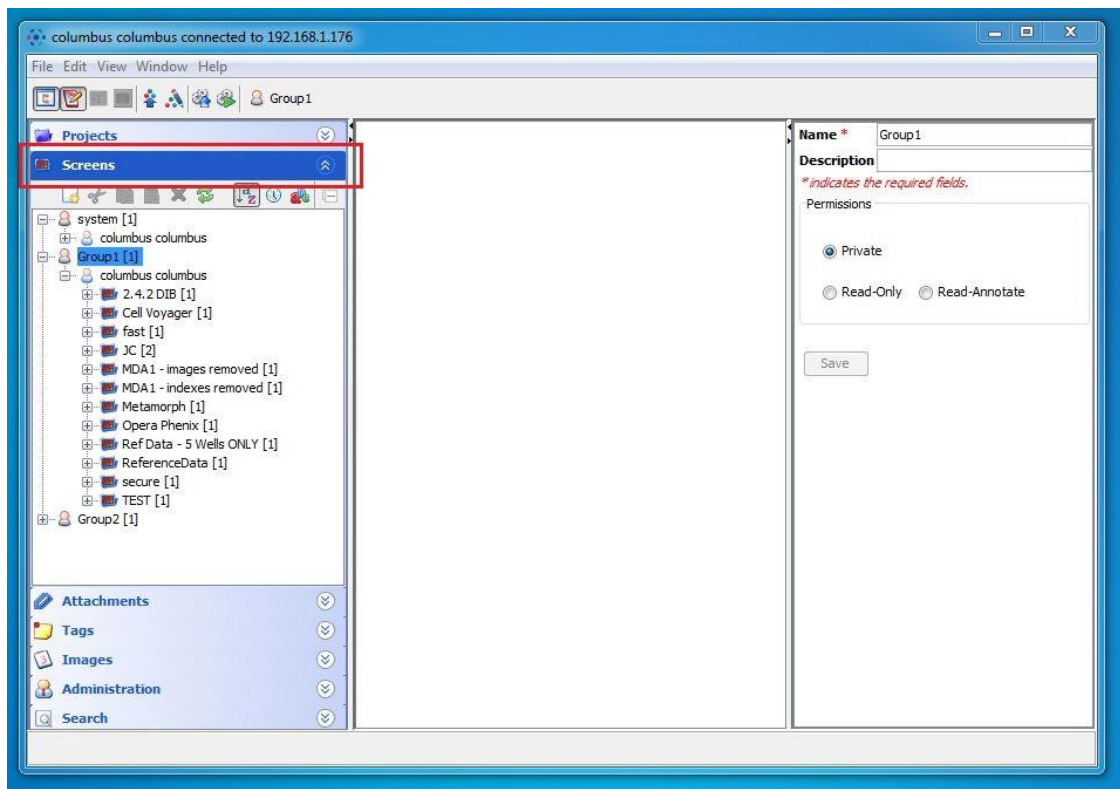
Viewing imported data in Columbus

Once the import is complete, log in to the Columbus web interface, navigate to the 'Browse' tab and select the Project data tree to view the newly imported data.



Deleting Data via Insight

Depending on whether your data is stored in the **Screens** list or **Project** list in Columbus, select either the Screens tab or Project tab from the pane on the left within Insight.



The data list is sorted using the following hierarchy:

Group | User | Screen | Plate | Measurement

Only data which the user has permissions to access (according to the user/group assignments in Columbus) will be displayed. Right-Click on any object displayed in the data tree and select 'Delete' from the context menu to delete the data.