



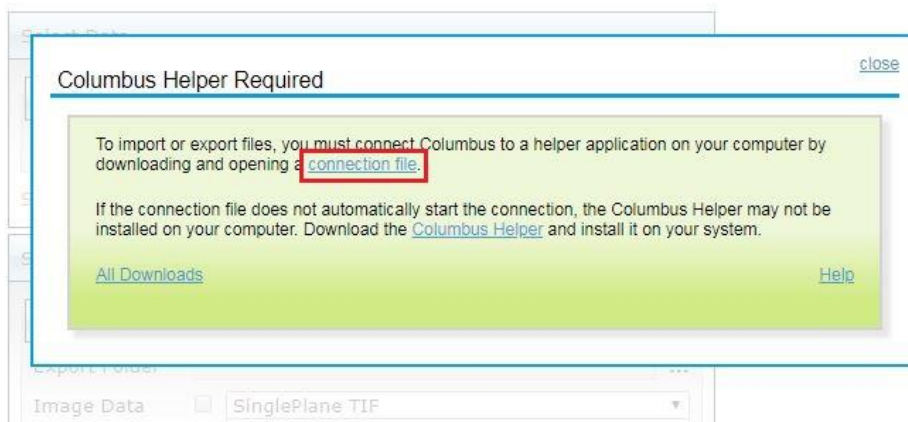
Manual Archiving

Overview

This guide outlines a basic workflow describing how to export data from Columbus so that it can be reimported later, i.e. a manual archive.

Exporting Data

Visit the Export view in Columbus and open the Helper connection file.



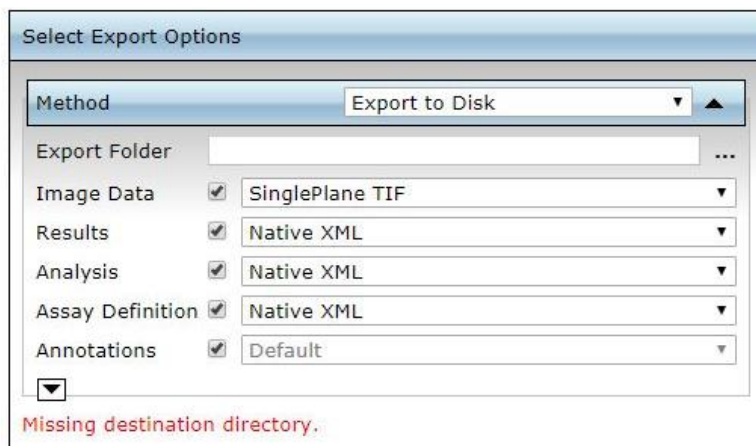
When choosing the file formats for export, the following selections should be made:

Image Data: SinglePlane TIF

Results: Native XML

Analysis: Native XML

Assay Definition: Native XML



Importing Data

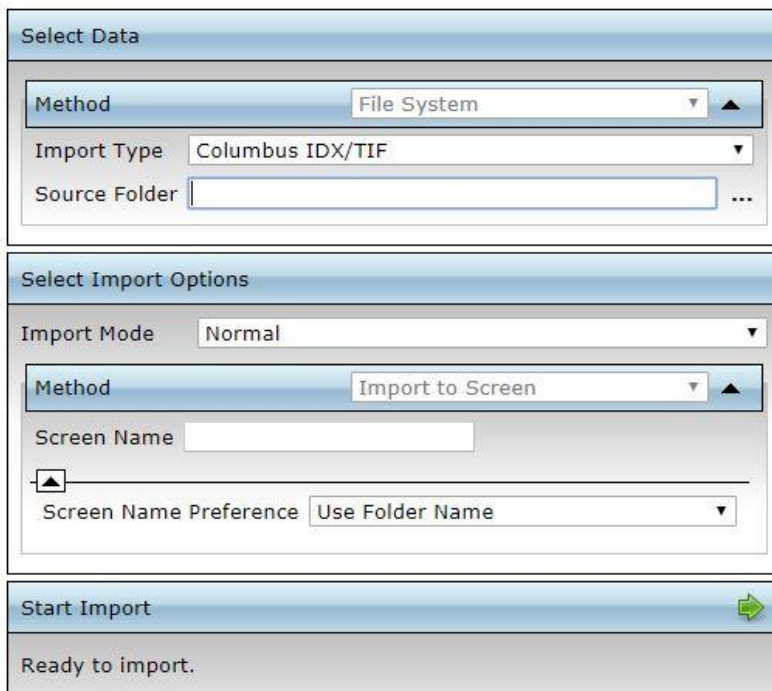
Visit the Import view in Columbus and open the Helper connection file.

The following import selections should be made:

Import Type: Columbus IDX/TIF

Source Folder: Select the [...] button to browse for any folder containing a previously exported data set

Screen Name Preference: Use Folder Name



Select Data

Method File System

Import Type Columbus IDX/TIF

Source Folder ...

Select Import Options

Import Mode Normal

Method Import to Screen

Screen Name

Screen Name Preference Use Folder Name

Start Import

Ready to import.

Deleting Data

Unused data can be deleted via the Browse view in the Columbus user interface. Right-Click on any object displayed in the data tree and select 'Delete' from the context menu to delete the data.